

# YK1000XG

Standard type: Large type

- Arm length 1000mm
- Maximum payload 20kg



## Ordering method

### YK1000XG

<b>Model</b>	<b>Z axis stroke</b>	<b>Tool flange</b>	<b>Cable</b>	<b>RCX340-4</b>								
	200: 200mm 400: 400mm	No entry: None F: With tool flange	3L: 3.5m 5L: 5m 10L: 10m	<b>Controller / Number of controllable axes</b>	<b>Safety standard</b>	<b>Option A (OP.A)</b>	<b>Option B (OP.B)</b>	<b>Option C (OP.C)</b>	<b>Option D (OP.D)</b>	<b>Option E (OP.E)</b>	<b>Absolute battery</b>	

Specify various controller setting items. RCX340 ▶ P.494

### RCX240

<b>Controller</b>	<b>CE Marking</b>	<b>Regenerative unit</b>	<b>Expansion I/O</b>	<b>Network option</b>	<b>IVY System</b>	<b>Gripper</b>	<b>Battery</b>
-------------------	-------------------	--------------------------	----------------------	-----------------------	-------------------	----------------	----------------

Specify various controller setting items. RCX240/RCX240S ▶ P.481

## Specifications

		X-axis	Y-axis	Z-axis	R-axis
<b>Axis specifications</b>	<b>Arm length</b>	600 mm	400 mm	200 mm	400 mm
	<b>Rotation angle</b>	+/-130 °	+/-150 °	-	+/-360 °
<b>AC servo motor output</b>		750 W	400 W	400 W	200 W
<b>Deceleration mechanism</b>	<b>Speed reducer</b>	Harmonic drive	Harmonic drive	Ball screw	Harmonic drive
	<b>Transmission method</b>	Direct-coupled			
	<b>Motor to speed reducer</b> <b>Speed reducer to output</b>	Direct-coupled			
<b>Repeatability</b> <sup>Note 1</sup>	+/-0.02 mm		+/-0.01 mm		+/-0.004 °
<b>Maximum speed</b>		10.6 m/sec	2.3 m/sec 1.7 m/sec		920 °/sec
<b>Maximum payload</b>		20 kg			
<b>Standard cycle time: with 2kg payload</b> <sup>Note 2</sup>		0.49 sec			
<b>R-axis tolerable moment of inertia</b> <sup>Note 3</sup>		1.0 kgm <sup>2</sup>			
<b>User wiring</b>		0.2 sq x 20 wires			
<b>User tubing (Outer diameter)</b>		φ 6 x 3			
<b>Travel limit</b>		1.Soft limit 2.Mechanical stopper (X,Y,Z axis)			
<b>Robot cable length</b>		Standard: 3.5 m Option: 5 m, 10 m			
<b>Weight</b>		Z axis 200 mm: 56 kg Z axis 400 mm: 58 kg			

Note 1. This is the value at a constant ambient temperature. (X,Y axes)  
 Note 2. When reciprocating 300mm in horizontal and 25mm in vertical directions.  
 Note 3. There are limits to acceleration coefficient settings. See P.525.  
 Note. Please consult YAMAHA when connecting other tubes and cables to the self-supporting machine harness.

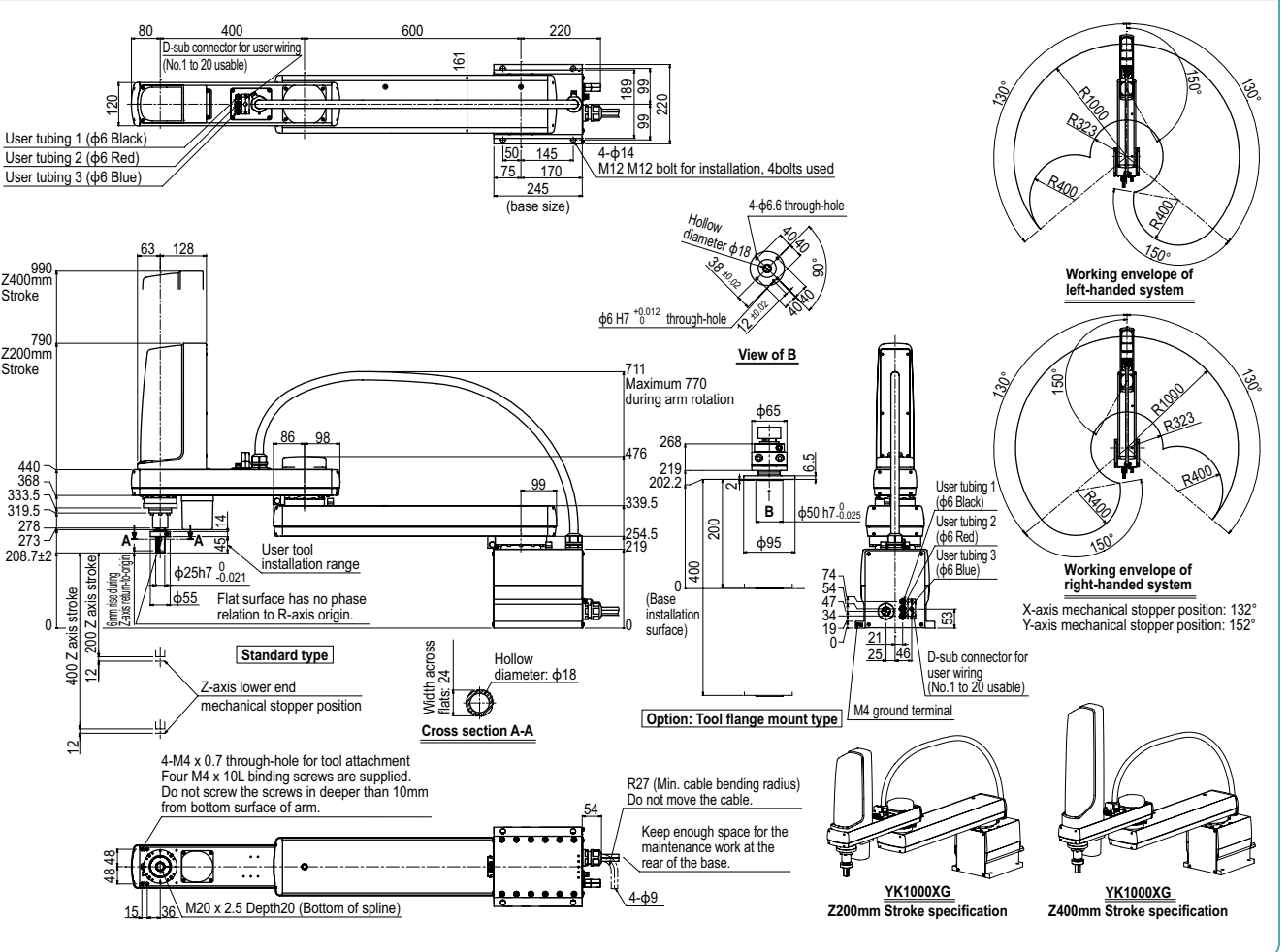
## Controller

Controller	Power capacity (VA)	Operation method
RCX340 RCX240-R3	2500	Programming / I/O point trace / Remote command / Operation using RS-232C communication

Note. "Harmonic" and "Harmonic drive" are the registered trademarks of Harmonic Drive Systems Inc.  
 Note. The movement range can be limited by changing the positions of X and Y axis mechanical stoppers. (The movement range is set to the maximum at the time of shipment.)  
 See our robot manuals (installation manuals) for detailed information.  
 Note. To set the standard coordinates with high accuracy, use a standard coordinate setting jig (option). Refer to the user's manual (installation manual) for more details.

Our robot manuals (installation manuals) can be downloaded from our website at the address below:  
<http://global.yamaha-motor.com/business/robot/>

## YK1000XG



APPLICATION  
 TRANSERO  
 FLIP-X  
 PHASER  
 XY-X  
 YK-X  
 YP-X  
 CLEAN  
 CONTROLLER INFORMATION  
 Obtr./Tny type  
 Small / Medium type  
 Large type  
 Wash-mount / Inverse type  
 Dust-proof & drip-proof type