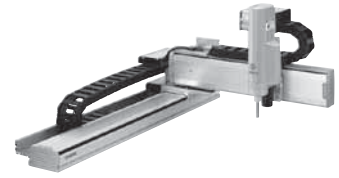


# SXYx **3 axes / ZS**

- Arm type
- Cable carrier
- Z-axis shaft vertical type



## Ordering method

<b>SXYx - C</b>					<b>15</b>		<b>RCX240</b>				<b>BB</b>	
<b>Model</b>	<b>Cable</b>	<b>Combination</b>	<b>X-axis stroke</b>	<b>Y-axis stroke</b>	<b>ZR-axis</b>	<b>Z-axis stroke</b>	<b>Cable length</b>	<b>Controller</b>	<b>Usable for CE</b>	<b>Option I/O</b> <sup>Note 1</sup>	<b>Network option</b>	<b>Battery</b>
	A1 A2 A3 A4		15 to 105cm	15 to 65cm	ZS12 ZS6		3L: 3.5m (Standard) 5L: 5m 10L: 10m		No entry: Standard E: CE marking	N.P. Standard I/O 168 N1, P1: 40/24 N2, P2: 64/40 N3, P3: 88/56 N4, P4: 112/72	No entry: None CC: CC-Link DN: DeviceNet PB: Profibus EN: Ethernet YC: YC-Link <sup>Note 2</sup>	BB: 4 pcs

Note 1. N to N4 if NPN was selected, or P to P4 if PNP was selected for the I/O board.  
Note 2. Available only for the master.

## Specification

	X-axis	Y-axis	Z-axis ZS12	Z-axis ZS6
<b>Axis construction</b> <sup>Note 1</sup>	F14H	F14	-	
<b>AC servo motor output (W)</b>	200	100	60	
<b>Repeatability</b> <sup>Note 2</sup> (mm)	+/-0.01	+/-0.01	+/-0.02	
<b>Drive system</b>	Ball screw (Class C7)	Ball screw (Class C7)	Ball screw (Class C10)	
<b>Ball screw lead (Deceleration ratio) (mm)</b>	20	20	12	6
<b>Maximum speed</b> <sup>Note 3</sup> (mm/sec)	1200	1200	1000	500
<b>Moving range (mm)</b>	150 to 1050	150 to 650	150	
<b>Robot cable length (m)</b>	Standard: 3.5 Option: 5,10			

Note 1. Use caution that the frame machining (installation holes, tap holes) differs from single-axis robots.  
Note 2. Positioning repeatability in one direction.  
Note 3. When the X-axis stroke is longer than 750mm, resonance of the ball screw may occur depending on the operation conditions (critical speed). In this case, reduce the speed setting on the program by referring to the maximum speeds shown in the table below.

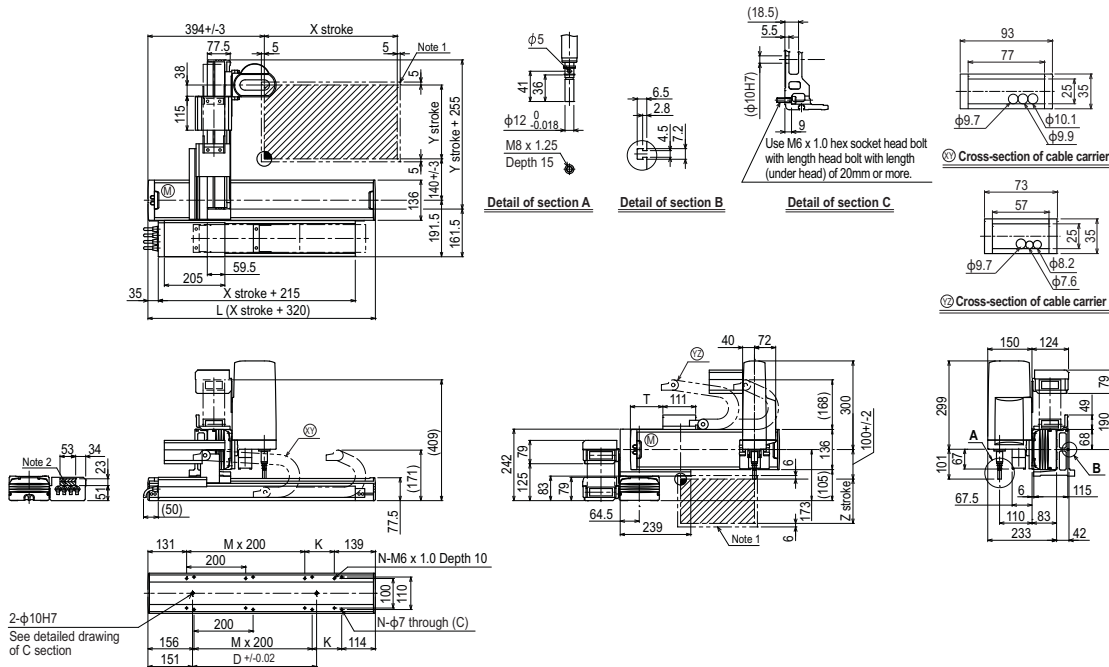
## Maximum payload (kg)

Y stroke (mm)	ZS12	ZS6
150 to 650	3	5

## Controller

Controller	Operation method
RCX240	Programming / I/O point trace / (BCD) Remote command / Operation using RS-232C communication

## SXYx 3 axes / ZS **A1**



X stroke	150	250	350	450	550	650	750	850	950	1050
L	470	570	670	770	870	970	1070	1170	1270	1370
K	200	100	200	100	200	100	200	100	200	100
D	240	240	420	420	600	600	780	960	960	1140
M	0	1	1	2	2	3	3	4	4	5
N	4	6	6	8	8	10	10	12	12	14
<b>Y stroke</b>	<b>150</b>	<b>250</b>	<b>350</b>	<b>450</b>	<b>550</b>	<b>650</b>				
T	55	110	165	215	270	325				
<b>Z stroke</b>	<b>150</b>									
<b>Maximum speed for each stroke (mm/sec)</b> <sup>Note 3</sup>	<b>X-axis</b>		1200		960	780	600	540		
<b>Speed setting</b>			-		80%	65%	50%	45%		

Note 1. The moving range when returning to origin and the stop position when stopping by the mechanical stopper.  
Note 2. The shaded position indicates an user cable extraction port.

Note 3. When the X-axis stroke is longer than 750mm, resonance of the ball screw may occur depending on the operation conditions (critical speed). In this case, reduce the speed setting on the program by referring to the maximum speeds shown in the table at the left.