

# SXYx 2 axes / ZS

● XZ type   ● Cable carrier

## Ordering method

**SXYx - C** [ ] [ ] [ ] **15** [ ] **RCX222** [ ] [ ] [ ]

Model	Cable	Combination	X-axis stroke	ZR-axis	Z-axis stroke	Cable length	Controller	Usable for CE	Input/Output selection 1	Input/Output selection 2
	F1 F3	15 to 105cm	ZS12 ZS6			3L: 3.5m (Standard) 5L: 5m 10L: 10m	RCX222	No entry: Standard E: CE marking	N: NPN Note 1 P: PNP CC: CC-Link DN: DeviceNet PB: Profibus EN: Ethernet Note 1 YC: YC-Link Note 2	No entry: None N1: OP.DIO24/16 (NPN) Note 1 P1: OP.DIO24/17 (PNP) EN: Ethernet Note 1 Note 3

Note 1. NPN and Ethernet cannot be selected if using CE marking.  
 Note 2. Available only for the master.  
 Note 3. Only when CC or DN or PB was selected for I/O select 1 above. EN can be selected in I/O select 2.

## Specification

	X-axis	Z-axis: ZS12	Z-axis: ZS6
Axis construction <sup>Note 1</sup>	F14		-
AC servo motor output (W)	100	60	
Repeatability <sup>Note 2</sup> (mm)	+/-0.01	+/-0.02	
Drive system	Ball screw (Class C7)	Ball screw (Class C10)	
Ball screw lead (Deceleration ratio) (mm)	20	12	6
Maximum speed <sup>Note 3</sup> (mm/sec)	During RCX240 use	1200	1000
	During DRCX use	1200	900
Moving range (mm)	150 to 1050	150	
Robot cable length (m)	Standard: 3.5 Option: 5,10		

Note 1. Use caution that the frame machining (installation holes, tap holes) differs from single-axis robots.  
 Note 2. Positioning repeatability in one direction.  
 Note 3. When the X-axis stroke is longer than 750mm, resonance of the ball screw may occur depending on the operation conditions (critical speed). In this case, reduce the speed setting on the program by referring to the maximum speeds shown in the table below.

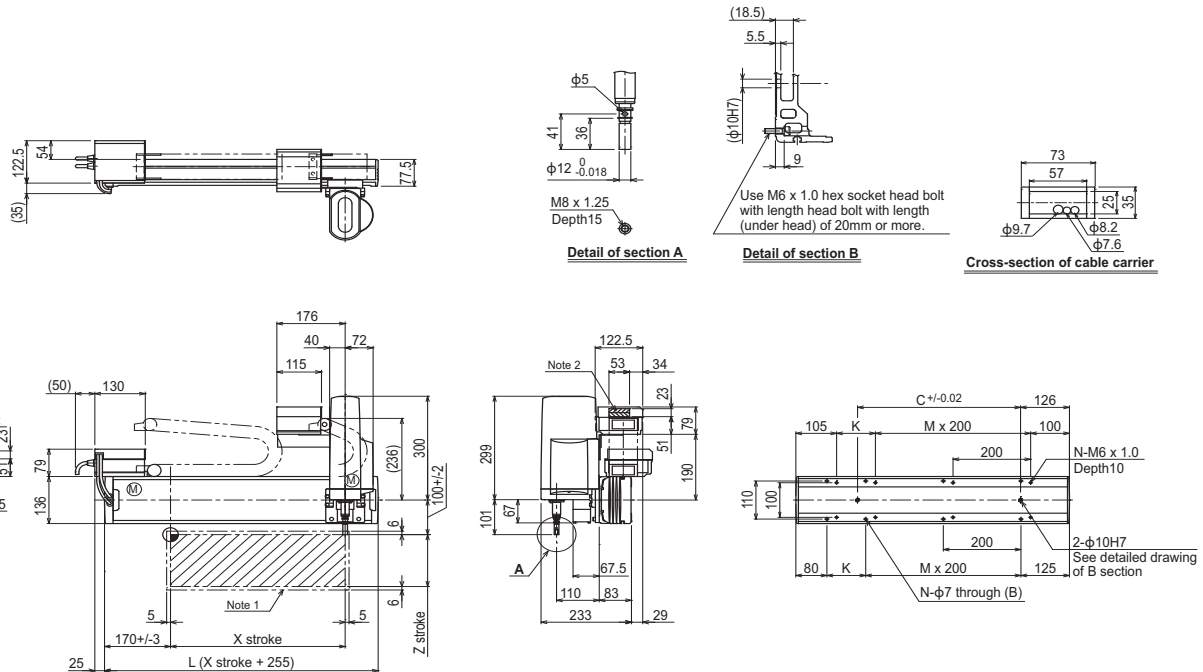
## Maximum payload (kg)

Y stroke (mm)	ZS12	ZS6
150 to 1050	3	5

## Controller

Controller	Operation method
RCX222	Programming / I/O point trace / (BCD) Remote command / Operation using RS-232C communication

## SXYx 2 axes / ZS F1



X stroke	150	250	350	450	550	650	750	850	950	1050	
	L	405	505	605	705	805	905	1005	1105	1205	1305
K	200	100	200	100	200	100	200	100	200	100	
C	240	240	420	420	600	600	780	780	960	960	
M	0	1	1	2	2	3	3	4	4	5	
N	4	6	6	8	8	10	10	12	12	14	
Z stroke	150										
Maximum speed for each stroke (mm/sec) <sup>Note 3</sup>	X-axis	1200					960	780	600	540	
	Speed setting	-					80%	65%	50%	45%	

Note 1. The moving range when returning to origin and the stop position when stopping by the mechanical stopper.  
 Note 2. The shaded position indicates an user cable extraction port.

Note 3. When the X-axis stroke is longer than 750mm, resonance of the ball screw may occur depending on the operation conditions (critical speed). In this case, reduce the speed setting on the program by referring to the maximum speeds shown in the table at the left.