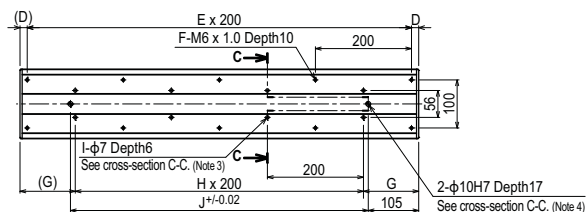
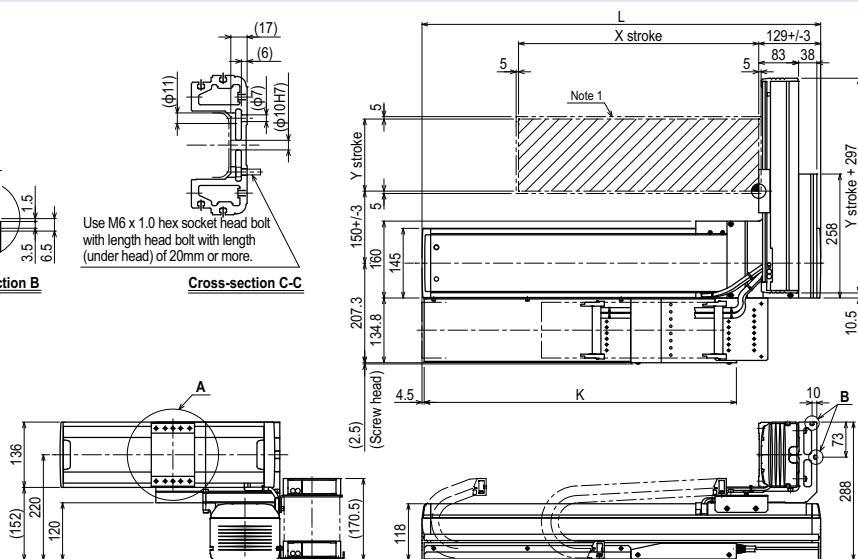
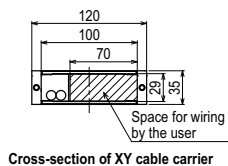
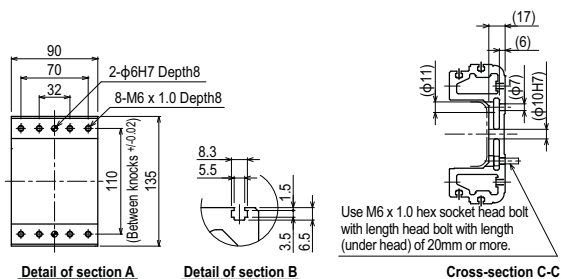


NXY 2 axes **A3**



| X stroke | 500 | 600 | 700 | 800 | 900 | 1000 | 1100 | 1200 | 1300 | 1400 | 1500 | 1600 | 1700 | 1800 | 1900 | 2000 |
|----------|-----|-----|------|------|------|------|------|------|------|------|------|------|------|------|------|------|
| L | 830 | 930 | 1030 | 1130 | 1230 | 1330 | 1430 | 1530 | 1630 | 1730 | 1830 | 1930 | 2030 | 2130 | 2230 | 2330 |
| D | 15 | 65 | 15 | 65 | 15 | 65 | 15 | 65 | 15 | 65 | 15 | 65 | 15 | 65 | 15 | 65 |
| E | 4 | 4 | 5 | 5 | 6 | 6 | 7 | 7 | 8 | 8 | 9 | 9 | 10 | 10 | 11 | 11 |
| F | 10 | 10 | 12 | 12 | 14 | 14 | 16 | 16 | 18 | 18 | 20 | 20 | 22 | 22 | 24 | 24 |
| G | 115 | 165 | 115 | 165 | 115 | 165 | 115 | 165 | 115 | 165 | 115 | 165 | 115 | 165 | 115 | 165 |
| H | 3 | 3 | 4 | 4 | 5 | 5 | 6 | 6 | 7 | 7 | 8 | 8 | 9 | 9 | 10 | 10 |
| I | 8 | 8 | 10 | 10 | 12 | 12 | 14 | 14 | 16 | 16 | 18 | 18 | 20 | 20 | 22 | 22 |
| J | 620 | 720 | 820 | 920 | 1020 | 1120 | 1220 | 1320 | 1420 | 1520 | 1620 | 1720 | 1820 | 1920 | 2020 | 2120 |
| K | 650 | 700 | 750 | 800 | 850 | 900 | 950 | 1000 | 1050 | 1100 | 1150 | 1200 | 1250 | 1300 | 1350 | 1400 |
| Y stroke | 150 | 250 | 350 | 450 | 550 | 650 | | | | | | | | | | |

- Note 1. The moving range when returning to origin and the stop position when stopping by the mechanical stopper.
- Note 2. The origin of the X axis is set originally as the drawing and it is possible to change it to the R side origin by changing parameters.
- Note 3. When using φ7 holes for installation, you must not use a washer, spring washer, etc. in the main unit.
- Note 4. When using a φ10H7 hole, make sure that the pin does not go into deeper than as shown in the drawing.
- Note 5. Use M4 tap of the box next to X axis for the user grounding terminal.
- Note 6. The M4 taps at both ends of the cable carriage can be used for fixing cables.