

# YK250XG

Standard type: Small type

- Arm length 250mm
- Maximum payload 5kg

## Ordering method

**YK250XG - 150**

<b>Model</b>	<b>Z axis stroke</b> 150: 150mm	<b>Tool flange</b> No entry: None F: With tool flange	<b>Hollow shaft</b> No entry: None S: With hollow shaft	<b>Cable</b> 3L: 3.5m 5L: 5m 10L: 10m
--------------	------------------------------------	---	---	--

**RCX340-4**

<b>Controller / Number of controllable axes</b>	<b>Safety standard</b>	<b>Option A (OP.A)</b>	<b>Option B (OP.B)</b>	<b>Option C (OP.C)</b>	<b>Option D (OP.D)</b>	<b>Option E (OP.E)</b>	<b>Absolute battery</b>
---	------------------------	------------------------	------------------------	------------------------	------------------------	------------------------	-------------------------

Specify various controller setting items. RCX340 ▶ **P.636**

## Specifications

		X-axis	Y-axis	Z-axis	R-axis
<b>Axis specifications</b>	<b>Arm length</b>	100 mm	150 mm	150 mm	-
	<b>Rotation angle</b>	+/-140 °	+/-144 °	-	+/-360 °
<b>AC servo motor output</b>		200 W	150 W	50 W	100 W
<b>Deceleration mechanism</b>	<b>Transmission method</b>	Direct-coupled			
	<b>Motor to speed reducer</b> Speed reducer to output	Direct-coupled			
<b>Repeatability</b> <sup>Note 1</sup>		+/-0.01 mm		+/-0.01 mm	+/-0.004 °
<b>Maximum speed</b>		4.5 m/sec		1.1 m/sec	1020 °/sec
<b>Maximum payload</b>		5 kg (Standard specification), 4 kg (Option specifications <sup>Note 4</sup> )			
<b>Standard cycle time: with 2kg payload</b> <sup>Note 2</sup>		0.43 sec			
<b>R-axis tolerable moment of inertia</b> <sup>Note 3</sup>		0.05 kgm <sup>2</sup> (0.5 kgfcm <sup>2</sup> )			
<b>User wiring</b>		0.2 sq x 10 wires			
<b>User tubing (Outer diameter)</b>		φ 4 x 3			
<b>Travel limit</b>		1.Soft limit 2.Mechanical stopper (X,Y,Z axis)			
<b>Robot cable length</b>		Standard: 3.5 m Option: 5 m, 10 m			
<b>Weight</b>		18.5 kg			

Note 1. This is the value at a constant ambient temperature. (X,Y axes)

Note 2. When reciprocating 300mm in horizontal and 25mm in vertical directions.

Note 3. The acceleration coefficient is set automatically in accordance with the tip weight and R-axis moment of inertia settings.

Note 4. Maximum payload of option specifications (with tool flange attached or with user wiring and tubing routed through spline shaft) is 4kg.

## Controller

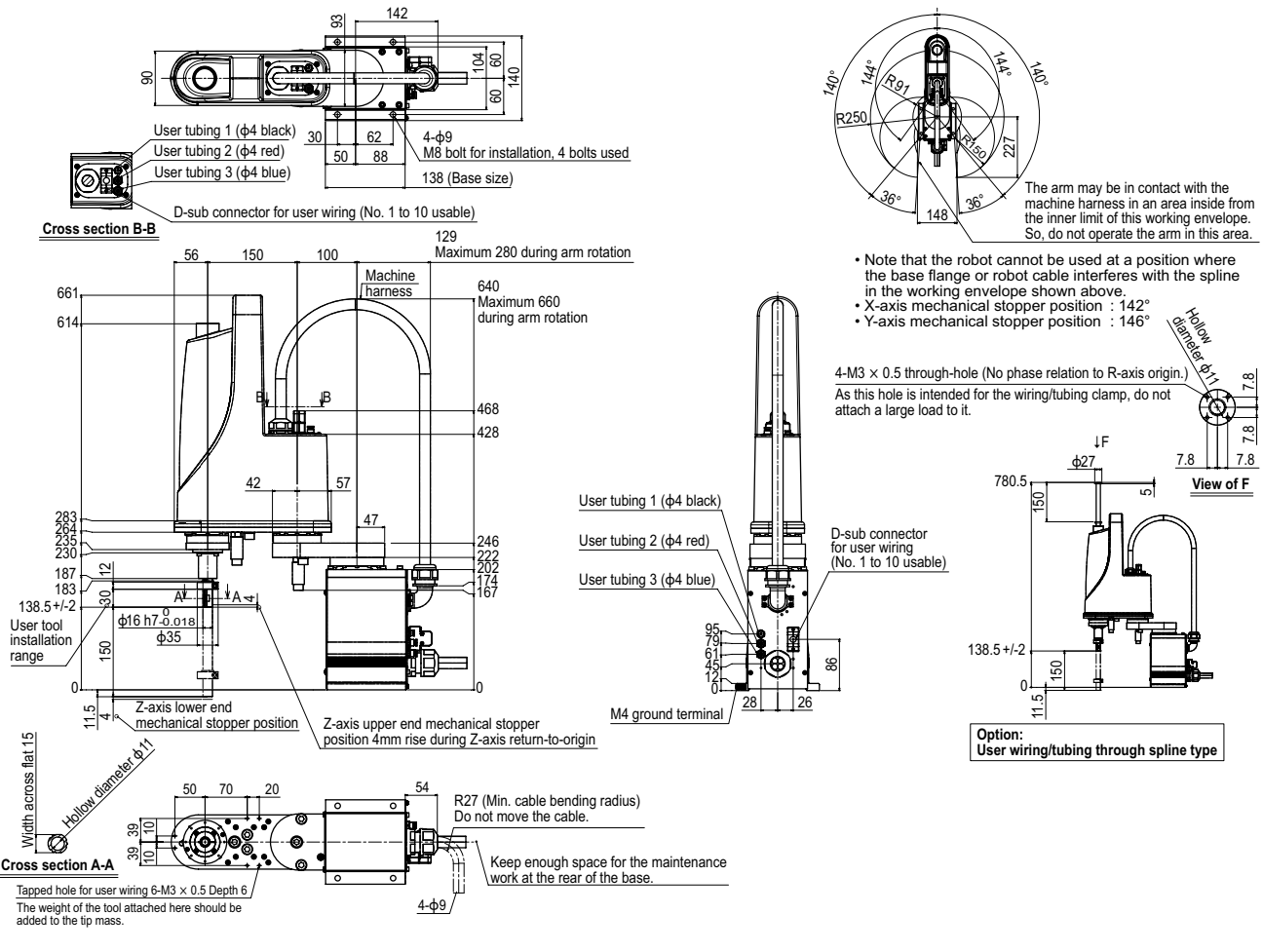
Controller	Power capacity (VA)	Operation method
RCX340	1000	Programming / I/O point trace / Remote command / Operation using RS-232C communication

Note. The movement range can be limited by changing the positions of X and Y axis mechanical stoppers. (The movement range is set to the maximum at the time of shipment.) See our robot manuals (installation manuals) for detailed information.

Note. To set the standard coordinates with high accuracy, use a standard coordinate setting jig (option). Refer to the user's manual (installation manual) for more details.

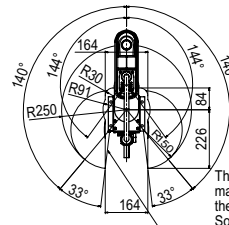
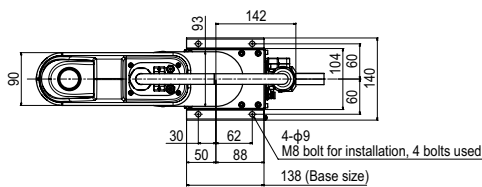
Our robot manuals (installation manuals) can be downloaded from our website at the address below:  
<https://global.yamaha-motor.com/business/robot/>

## YK250XG



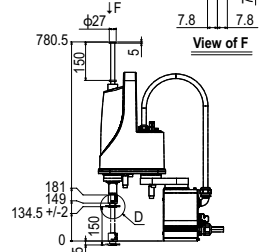
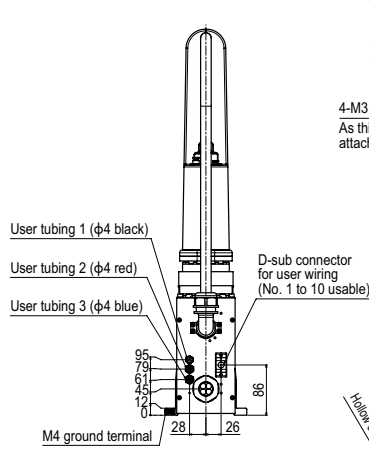
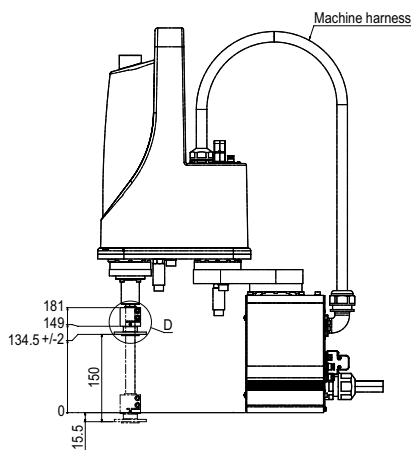
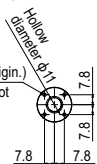
- Linear conveyor modules  
LCMR200
- Single-axis robots  
GX
- Linear conveyor modules  
LCM100
- SCARA robots  
YK-X
- Single-axis robots  
Robonity
- Linear motor single-axis robots  
PHASER
- Single-axis robots  
FLIP-X
- Compact single-axis robots  
TRANSERO
- Cartesian robots  
XY-X
- Pick & place robots  
YP-X
- CLEAN
- CONTROLLER INFORMATION
- Oh!h/ Extra small type
- Small type
- Large type
- Wall mount / Inverse type
- Dust-proof & drip-proof type

## YK250XG Tool flange mount type

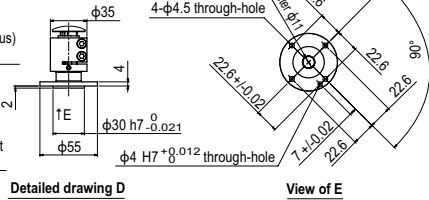
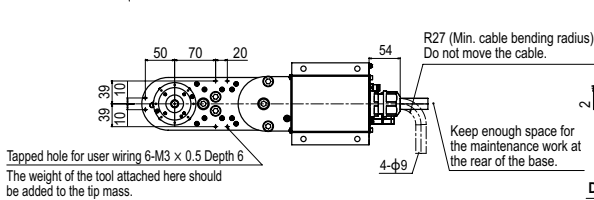


- Note that the robot cannot be used at a position where the base flange or robot cable interferes with the tool flange in the working envelope shown above.
- X-axis mechanical stopper position : 142°
- Y-axis mechanical stopper position : 146°

4-M3 x 0.5 through-hole (No phase relation to R-axis origin.)  
As this hole is intended for the wiring/tubing clamp, do not attach a large load to it.



Option:  
User wiring/tubing through spline type



Tapped hole for user wiring 6-M3 x 0.5 Depth 6  
The weight of the tool attached here should be added to the tip mass.