

SXYx **3 axes / ZS**

● Arm type ● Whipover ● Z-axis shaft vertical type



Ordering method

SXYx - S [] [] [] [] **15** [] [] [] [] [] [] [] [] [] [] [] []

Model	Cable	Combination	X-axis stroke	Y-axis stroke	ZR-axis	Z-axis stroke	Cable	Controller / Number of controllable axes	Safety standard	Option A (OP.A)	Option B (OP.B)	Option C (OP.C)	Option D (OP.D)	Option E (OP.E)	Absolute battery
A1			15 to 85cm	15 to 65cm	ZS12		3L: 3.5m	RCX340-3							
A2					ZS6		5L: 5m	RCX240S							
A3							10L: 10m								
A4															

Specify various controller setting items. RCX340 ▶ **P494**

Specify various controller setting items. RCX240/RCX240S ▶ **P481**

Specification

	X-axis	Y-axis	Z-axis: ZS12	Z-axis: ZS6
Axis construction ^{Note 1}	F14H	F14	-	
AC servo motor output (W)	200	100	60	
Repeatability ^{Note 2} (mm)	+/-0.01	+/-0.01	+/-0.02	
Drive system	Ball screw (Class C7)	Ball screw (Class C7)	Ball screw (Class C10)	
Ball screw lead (Deceleration ratio) (mm)	20	20	12	6
Maximum speed ^{Note 3} (mm/sec)	1200	1200	1000	500
Moving range (mm)	150 to 850	150 to 650	150	
Robot cable length (m)	Standard: 3.5 Option: 5,10			

Note 1. Use caution that the flame machining (installation holes, tap holes) differs from single-axis robots.
 Note 2. Positioning repeatability in one direction.
 Note 3. When the X-axis stroke is longer than 750mm, resonance of the ball screw may occur depending on the operation conditions (critical speed). In this case, reduce the speed setting on the program by referring to the maximum speeds shown in the table below.

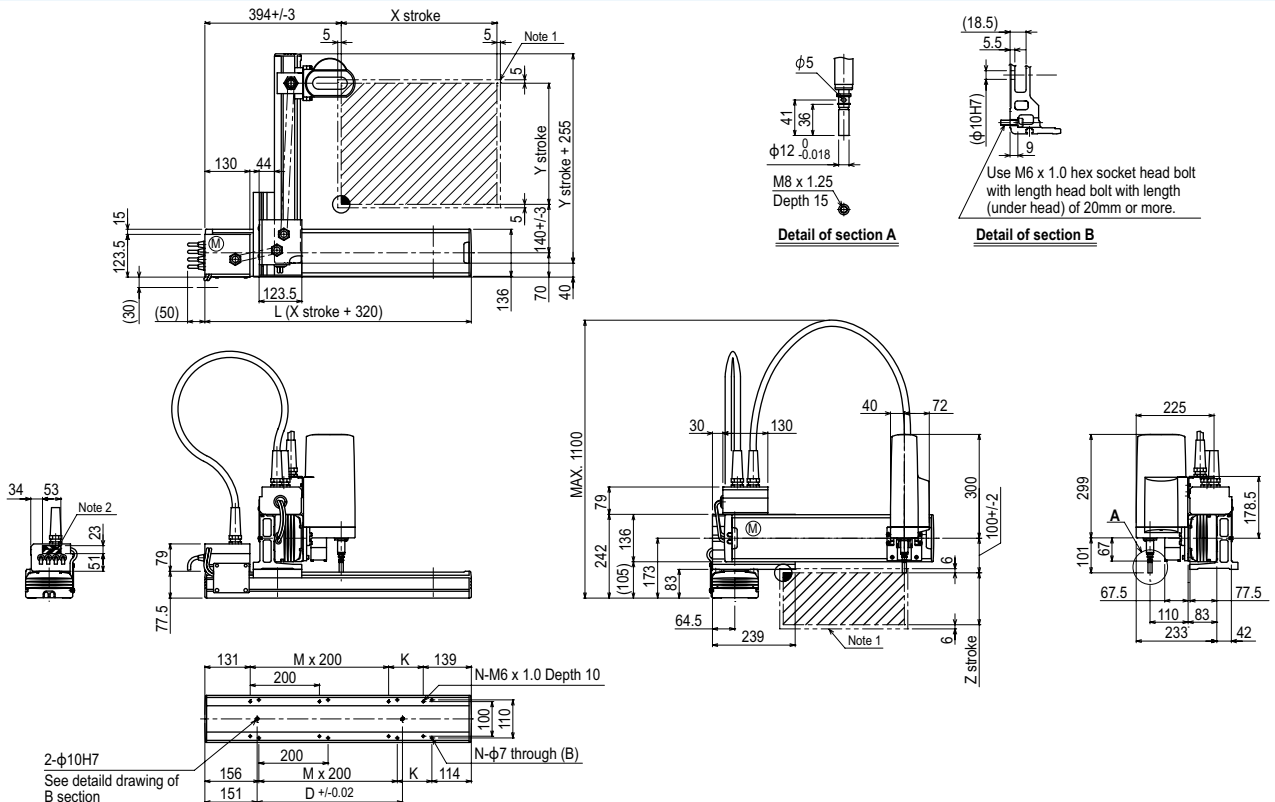
Maximum payload (kg)

Y stroke (mm)	ZS12	ZS6
150 to 650	3	5

Controller

Controller	Operation method
RCX340 RCX240S	Programming / I/O point trace / Remote command / Operation using RS-232C communication

SXYx 3 axes / ZS **A1**



X stroke	150	250	350	450	550	650	750	850
L	470	570	670	770	870	970	1070	1170
K	200	100	200	100	200	100	200	100
D	240	240	420	420	600	600	780	960
M	0	1	1	2	2	3	3	4
N	4	6	6	8	8	10	10	12
Y stroke	150	250	350	450	550	650		
Z stroke	150							
Maximum speed for each stroke (mm/sec) ^{Note 3}	X-axis		1200			960		780
Speed setting			-			80%		65%

Note 1. The moving range when returning to origin and the stop position when stopping by the mechanical stopper.
 Note 2. The shaded position indicates a user cable extraction port.

Note 3. When the X-axis stroke is longer than 750mm, resonance of the ball screw may occur depending on the operation conditions (critical speed). In this case, reduce the speed setting on the program by referring to the maximum speeds shown in the table at the left.

APPLICATION
 TRANSERO
 Compact single-axis robots
 FLIP-X
 Single-axis robots
 PHASER
 Linear motor single-axis robots
 XY-X
 Cartesian robots
 YK-X
 SCARA robots
 YP-X
 Pick & place robots
 CLEAN
 CONTROLLER INFORMATION
 Arm type
 Gantry type
 Moving arm type
 Pole type
 XZ type