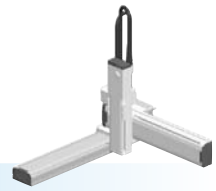


- Arm type
- Whipover
- Z-axis: clamped base / moving table type (100W)



### Ordering method

**SXYx - S** [ ] [ ] [ ] **ZF** [ ] [ ] **RCX340-3** [ ] [ ] [ ] [ ] [ ] [ ] [ ] [ ] [ ] [ ]

**Model** - **Cable** - **Combination** - **X-axis stroke** - **Y-axis stroke** - **ZR-axis** - **Z-axis stroke** - **Cable**

A1 15 to 85cm 15 to 65cm 15 to 35cm 3L: 3.5m  
A2 5L: 5m  
A3 10L: 10m  
A4

**RCX240S** [ ] [ ] [ ] [ ] [ ] [ ] **BB**

Controller / Number of controllable axes Safety standard Option A (OP.A) Option B (OP.B) Option C (OP.C) Option D (OP.D) Option E (OP.E) Absolute battery

Specify various controller setting items. RCX340 ▶ **P494**

Controller CE Marking Expansion I/O Network option iVY System Gripper Battery

Specify various controller setting items. RCX240/RCX240S ▶ **P481**

### Specification

	X-axis	Y-axis	Z-axis
Axis construction <sup>Note 1</sup>	F14H	F14	F10-BK
AC servo motor output (W)	200	100	100
Repeatability <sup>Note 2</sup> (mm)	+/-0.01	+/-0.01	+/-0.01
Drive system	Ball screw (Class C7)	Ball screw (Class C7)	Ball screw (Class C7)
Ball screw lead (Deceleration ratio) (mm)	20	20	10
Maximum speed <sup>Note 3</sup> (mm/sec)	1200	1200	600
Moving range (mm)	150 to 850	150 to 650	150 to 350
Robot cable length (m)	Standard: 3.5 Option: 5,10		

Note 1. Use caution that the flange machining (installation holes, tap holes) differs from single-axis robots.  
 Note 2. Positioning repeatability in one direction.  
 Note 3. When the X-axis stroke is longer than 750mm, resonance of the ball screw may occur depending on the operation conditions (critical speed). In this case, reduce the speed setting on the program by referring to the maximum speeds shown in the table below.

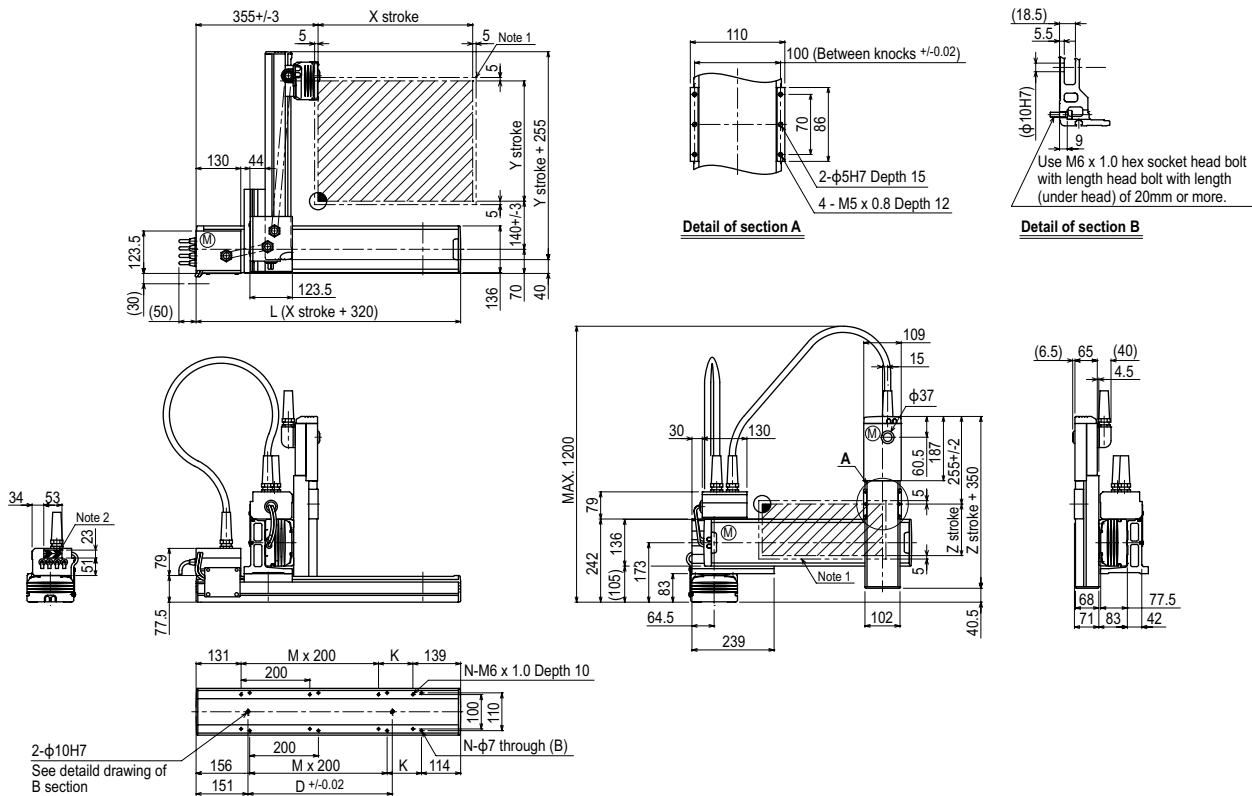
### Maximum payload (kg)

Y stroke (mm)	Z stroke (mm)		
	150	250	350
150	10	10	10
250	10	10	9
350	9	8	7
450	7	6	5
550	5	4	3
650	3	2	1

### Controller

Controller	Operation method
RCX340 RCX240S	Programming / I/O point trace / Remote command / Operation using RS-232C communication

### SXYx 3 axes / ZF (A1)



X stroke	150	250	350	450	550	650	750	850
	L	470	570	670	770	870	970	1070
K	200	100	200	100	200	100	200	100
D	240	240	420	420	600	600	780	960
M	0	1	1	2	2	3	3	4
N	4	6	6	8	8	10	10	12
Y stroke		150	250	350	450	550	650	
Z stroke		150	250	350				
Maximum speed for each stroke (mm/sec) <sup>Note 3</sup>	X-axis	1200					960	780
	Speed setting	-					80%	65%

Note 1. The moving range when returning to origin and the stop position when stopping by the mechanical stopper.  
 Note 2. The shaded position indicates an user cable extraction port.

Note 3. When the X-axis stroke is longer than 750mm, resonance of the ball screw may occur depending on the operation conditions (critical speed). In this case, reduce the speed setting on the program by referring to the maximum speeds shown in the table at the left.

APPLICATION  
TRANSERO  
Compact single-axis robots

FLIP-X  
Single-axis robots

PHASER  
Linear motor single-axis robots

XY-X  
Cartesian robots

YK-X  
SCARA robots

YP-X  
Pick & place robots

CLEAN  
CLEAN CONTROLLER INFORMATION

Arm type  
Gantry type  
Moving arm type  
Pole type  
XZ type