

Ordering method

HXYx - C [] [] [] **ZRH** [] [] [] **RCX340-4** [] [] [] [] [] [] [] [] [] [] [] []

Model - **Cable** - **Combination** - **X-axis stroke** - **Y-axis stroke** - **ZR-axis** - **Z-axis stroke** - **Cable**

A1: 25 to 125cm
 A2: 25 to 65cm
 A3: 25 to 55cm
 A4: 25 to 55cm

3L: 3.5m
 5L: 5m
 10L: 10m

RCX340-4 Controller / Number of controllable axes - Safety standard - Option A (OP.A) - Option B (OP.B) - Option C (OP.C) - Option D (OP.D) - Option E (OP.E) - Absolute battery

Specify various controller setting items. RCX340 ▶ P.494

RCX240 [] **R** [] [] [] [] **BB**

Controller - CE Marking - Regenerative unit - Expansion I/O - Network option - iVY System - Gripper - Battery

Specify various controller setting items. RCX240/RCX240S ▶ P.481

Specification

| | X-axis | Y-axis | Z-axis | R-axis |
|---|----------------------------|-----------------------|-----------------------|---------------|
| Axis construction <small>Note 1</small> | F20 | F17 | F14H-BK | R20 |
| AC servo motor output (W) | 600 | 400 | 200 | 200 |
| Repeatability <small>Note 2</small> (XYZ: mm)(R: °) | +/-0.01 | +/-0.01 | +/-0.01 | +/-0.0083 |
| Drive system | Ball screw (Class C7) | Ball screw (Class C7) | Ball screw (Class C7) | Harmonic gear |
| Ball screw lead (Deceleration ratio) (mm) | 20 | 20 | 5 | (1/50) |
| Maximum speed <small>Note 3</small> (XYZ: mm/sec) (R: °/sec) | 1200 | 1200 | 300 | 360 |
| Moving range (XYZ: mm) (R: °) | 250 to 1250 | 250 to 650 | 250 to 550 | 360 |
| Robot cable length (m) | Standard: 3.5 Option: 5.10 | | | |

Note 1. Use caution that the flame machining (installation holes, tap holes) differs from single-axis robots.
 Note 2. Positioning repeatability in one direction.
 Note 3. When the X-axis stroke is longer than 850mm, resonance of the ball screw may occur depending on the operation conditions (critical speed). In this case, reduce the speed setting on the program by referring to the maximum speeds shown in the table below.

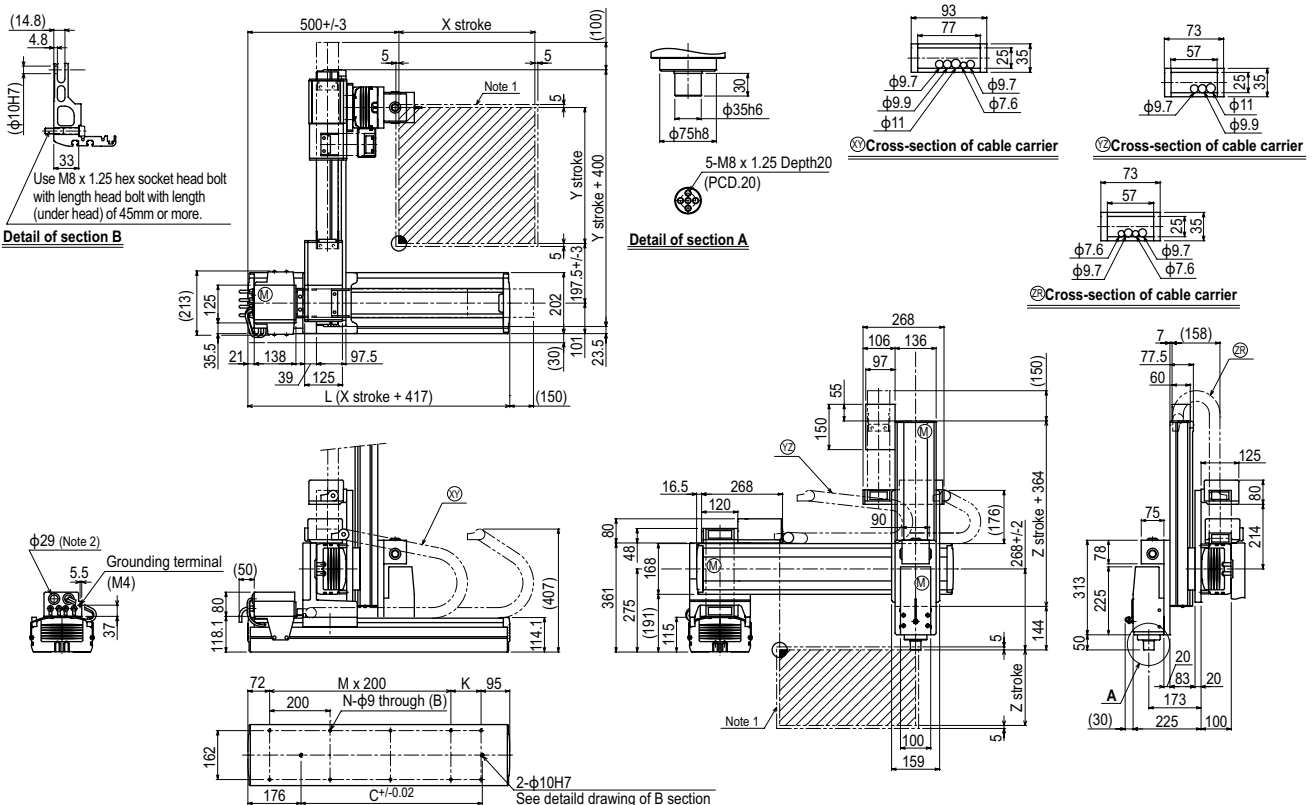
Maximum payload (kg)

| Y stroke (mm) | Z stroke (mm) | | | |
|---------------|---------------|-----|-----|-----|
| | 250 | 350 | 450 | 550 |
| 250 | 12 | 12 | 12 | 12 |
| 350 | 12 | 12 | 12 | 12 |
| 450 | 12 | 12 | 12 | 11 |
| 550 | 11 | 10 | 9 | 8 |
| 650 | 11 | 10 | 9 | 8 |

Controller

| Controller | Operation method |
|--------------------|--|
| RCX340 RCX240-R | Programming / I/O point trace / Remote command / Operation using RS-232C communication |

HXYx 4 axes / ZRH A1



| X stroke | 250 | 350 | 450 | 550 | 650 | 750 | 850 | 950 | 1050 | 1150 | 1250 | |
|---|----------------------|------|-----|-----|-----|------|------|------|------|------|------|------|
| | L | 667 | 767 | 867 | 967 | 1067 | 1167 | 1267 | 1367 | 1467 | 1567 | 1667 |
| K | 100 | 200 | 100 | 200 | 100 | 200 | 100 | 200 | 100 | 200 | 100 | |
| C | 420 | 420 | 600 | 600 | 780 | 780 | 960 | 960 | 1140 | 1320 | 1320 | |
| M | 2 | 2 | 3 | 3 | 4 | 4 | 5 | 5 | 6 | 6 | 7 | |
| N | 8 | 8 | 10 | 10 | 12 | 12 | 14 | 14 | 16 | 16 | 18 | |
| Y stroke | 250 | 350 | 450 | 550 | 650 | | | | | | | |
| Z stroke | 250 | 350 | 450 | 550 | | | | | | | | |
| Maximum speed for each stroke (mm/sec) <small>Note 3</small> | X-axis | 1200 | | | | 960 | 840 | 720 | 600 | 480 | | |
| | Speed setting | - | | | | 80% | 70% | 60% | 50% | 40% | | |

Note 1. The moving range when returning to origin and the stop position when stopping by the mechanical stopper.
 Note 2. User cable extraction port.

Note 3. When the X-axis stroke is longer than 850mm, resonance of the ball screw may occur depending on the operation conditions (critical speed). In this case, reduce the speed setting on the program by referring to the maximum speeds shown in the table at the left.

APPLICATION
TRANSERO
Compact single-axis robots

FLIP-X
Single-axis robots

PHASER
Linear motor single-axis robots

XY-X
Cartesian robots

YK-X
SCARA robots

YP-X
Pick & place robots

CLEAN
CLEAN

CONTROLLER INFORMATION

Arm type
Gantry type
Moving arm type
Pole type
XZ type