

HXYx 2 axes

● Arm type ● Cable carrier



Ordering method

| | | | | | | | | | | |
|-----------------|--------------|--------------------|----------------------|----------------------|--------------------------------|-------------------|-------------------------------------|--------------------------|---|--|
| HXYx - C | | | | | RCX222HP | | R | | | |
| Model | Cable | Combination | X-axis stroke | Y-axis stroke | Cable | Controller | Usable for CE | Regenerative unit | Input/Output selection 1 | Input/Output selection 2 |
| A1 | | | 25 to 125cm | 25 to 65cm | 3L: 3.5m 5L: 5m 10L: 10m | RCX222HP | No entry: Standard E: CE marking | R: RG2 | N: NPN ^{Note 1} P: PNP CC: CC-Link DN: DeviceNet TM PB: PROFIBUS EN: Ethernet ^{Note 2} YC: YC-Link ^{Note 2} | No entry: None N1: OPDI024/16 (NPN) ^{Note 1} P1: OPDI024/17 (PNP) EN: Ethernet ^{Note 3} |

Note 1. NPN cannot be selected if using CE marking.
 Note 2. Available only for the master. See P.54 for details on YC-Link system.
 Note 3. Only when CC or DN or PB was selected for I/O select 1 above. EN can be selected in I/O select 2.

Specification

| | X-axis | Y-axis |
|--|----------------------------|-----------------------|
| Axis construction ^{Note 1} | F20 | F17 |
| AC servo motor output (W) | 600 | 400 |
| Repeatability ^{Note 2} (mm) | +/-0.01 | +/-0.01 |
| Drive system | Ball screw (Class C7) | Ball screw (Class C7) |
| Ball screw lead (Deceleration ratio) (mm) | 20 | 20 |
| Maximum speed ^{Note 3} (mm/sec) | 1200 | 1200 |
| Moving range (mm) | 250 to 1250 | 250 to 650 |
| Robot cable length (m) | Standard: 3.5 Option: 5,10 | |

Note 1. Use caution that the flame machining (installation holes, tap holes) differs from single-axis robots.
 Note 2. Positioning repeatability in one direction.
 Note 3. When the X-axis stroke is longer than 850mm, resonance of the ball screw may occur depending on the operation conditions (critical speed). In this case, reduce the speed setting on the program by referring to the maximum speeds shown in the table below.

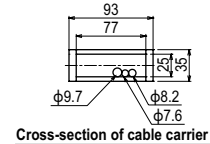
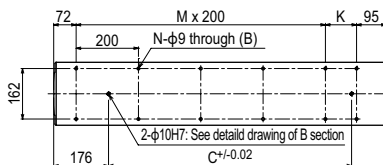
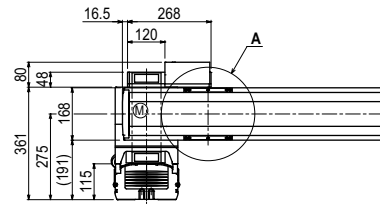
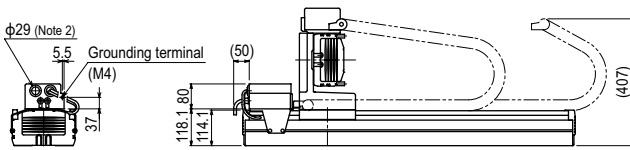
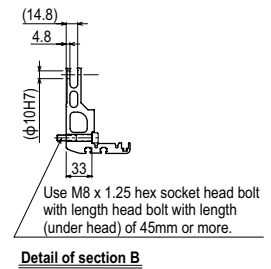
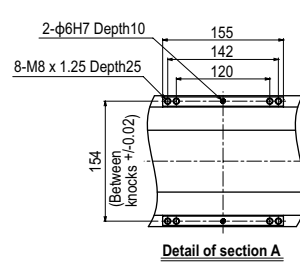
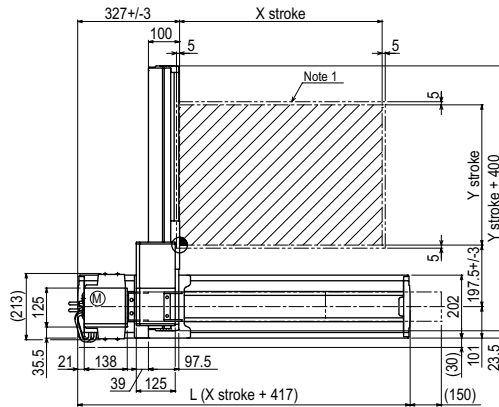
Maximum payload (kg)

| Y stroke (mm) | XY 2 axes |
|---------------|-----------|
| 250 | 40 |
| 350 | 40 |
| 450 | 35 |
| 550 | 30 |
| 650 | 30 |

Controller

| Controller | Operation method |
|------------|--|
| RCX222HP-R | Programming / I/O point trace / Remote command / Operation using RS-232C communication |

HXYx 2 axes A1

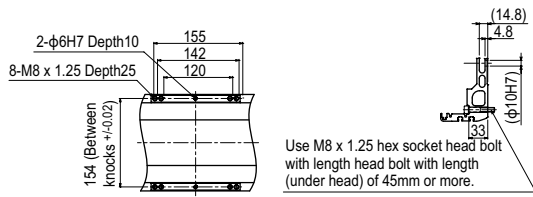


| X stroke | 250 | 350 | 450 | 550 | 650 | 750 | 850 | 950 | 1050 | 1150 | 1250 |
|---|----------------------|------------|------------|------------|------------|------|------|------|------|------|------|
| L | 667 | 767 | 867 | 967 | 1067 | 1167 | 1267 | 1367 | 1467 | 1567 | 1667 |
| K | 100 | 200 | 100 | 200 | 100 | 200 | 100 | 200 | 100 | 200 | 100 |
| C | 420 | 420 | 600 | 600 | 780 | 780 | 960 | 960 | 1140 | 1320 | 1320 |
| M | 2 | 2 | 3 | 3 | 4 | 4 | 5 | 5 | 6 | 6 | 7 |
| N | 8 | 8 | 10 | 10 | 12 | 12 | 14 | 14 | 16 | 16 | 18 |
| Y stroke | 250 | 350 | 450 | 550 | 650 | | | | | | |
| Maximum speed for each stroke (mm/sec) ^{Note 3} | X-axis | | 1200 | | | | 960 | 840 | 720 | 600 | 480 |
| | Speed setting | | - | | | | 80% | 70% | 60% | 50% | 40% |

Note 1. The moving range when returning to origin and the stop position when stopping by the mechanical stopper.
 Note 2. User cable extraction port.

Note 3. When the X-axis stroke is longer than 850mm, resonance of the ball screw may occur depending on the operation conditions (critical speed). In this case, reduce the speed setting on the program by referring to the maximum speeds shown in the table at the left.

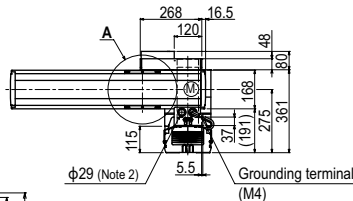
HXYx 2 axes **A2**



Detail of section A

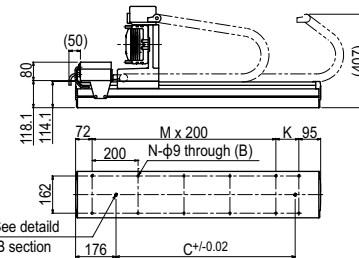
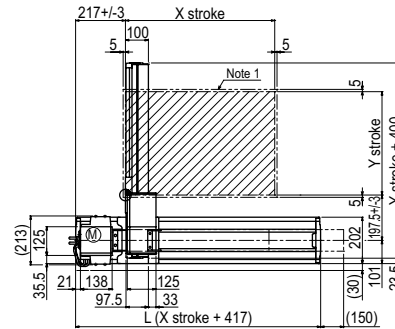
Detail of section B

Use M8 x 1.25 hex socket head bolt with length head bolt with length (under head) of 45mm or more.

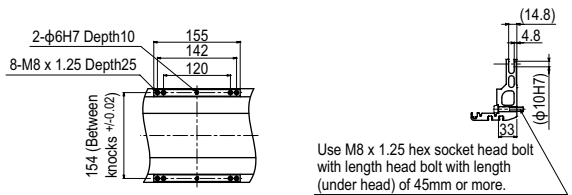


Cross-section of cable carrier

2-φ10H7: See detail drawing of B section

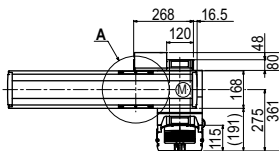


HXYx 2 axes **A3**

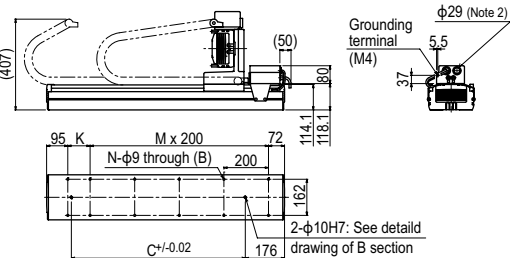
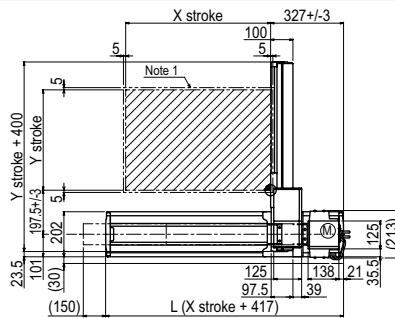


Detail of section A

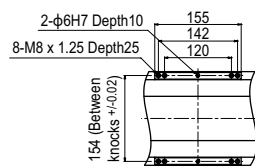
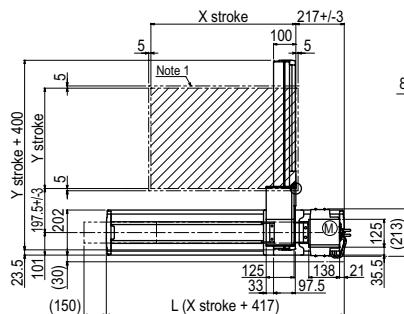
Detail of section B



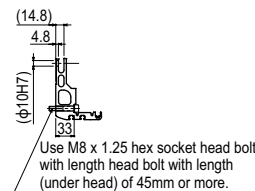
Cross-section of cable carrier



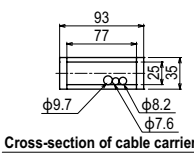
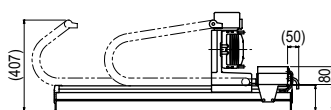
HXYx 2 axes **A4**



Detail of section A



Detail of section B



Cross-section of cable carrier

