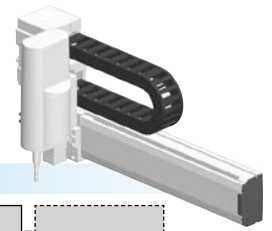


SXYx 2 axes / ZS

- XZ type
- Cable carrier
- Z-axis shaft vertical type



Ordering method

SXYx - C				15		RCX222				
Model	Cable	Combination	X-axis stroke	ZR-axis	Z-axis stroke	Cable	Controller	Usable for CE	Input/Output selection 1	Input/Output selection 2
	F1 F3		15 to 105cm	ZS12 ZS6		3L: 3.5m 5L: 5m 10L: 10m	RCX222	No entry: Standard E: CE marking	N: NPN P: PNP CC: CC-Link DN: DeviceNet™ PB: PROFIBUS EN: Ethernet YC: YC-Link	No entry: None N1: OP.DIO24/16 (NPN) P1: OP.DIO24/17 (PNP) EN: Ethernet

Note 1. NPN cannot be selected if using CE marking.
 Note 2. Available only for the master. See P.54 for details on YC-Link system.
 Note 3. Only when CC or DN or PB was selected for I/O select 1 above. EN can be selected in I/O select 2.

Specification

	X-axis	Z-axis: ZS12	Z-axis: ZS6
Axis construction <small>Note 1</small>	F14		-
AC servo motor output (W)	100		60
Repeatability <small>Note 2</small> (mm)	+/-0.01		+/-0.02
Drive system	Ball screw (Class C7)		Ball screw (Class C10)
Ball screw lead (Deceleration ratio) (mm)	20	12	6
Maximum speed <small>Note 3</small> (mm/sec)	During RCX240 use	1200	1000
	During DRCX use	1200	900
Moving range (mm)	150 to 1050		150
Robot cable length (m)	Standard: 3.5 Option: 5,10		

Note 1. Use caution that the flame machining (installation holes, tap holes) differs from single-axis robots.
 Note 2. Positioning repeatability in one direction.
 Note 3. When the X-axis stroke is longer than 750mm, resonance of the ball screw may occur depending on the operation conditions (critical speed). In this case, reduce the speed setting on the program by referring to the maximum speeds shown in the table below.

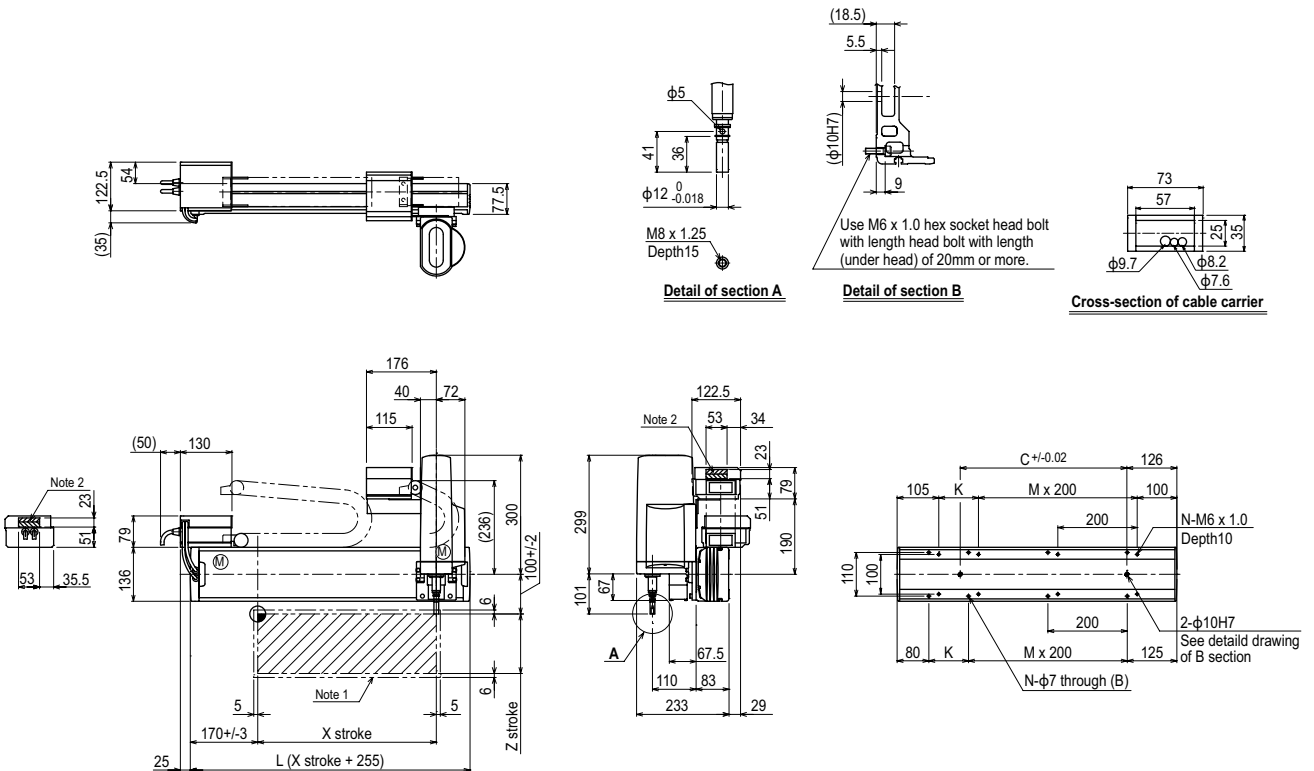
Maximum payload (kg)

Y stroke (mm)	ZS12	ZS6
150 to 1050	3	5

Controller

Controller	Operation method
RCX222	Programming / I/O point trace / Remote command / Operation using RS-232C communication

SXYx 2 axes / ZS (F1)



X stroke	150	250	350	450	550	650	750	850	950	1050	
L	405	505	605	705	805	905	1005	1105	1205	1305	
K	200	100	200	100	200	100	200	100	200	100	
C	240	240	420	420	600	600	780	780	960	960	
M	0	1	1	2	2	3	3	4	4	5	
N	4	6	6	8	8	10	10	12	12	14	
Z stroke	150										
Maximum speed for each stroke (mm/sec) <small>Note 3</small>	X-axis	1200					960	780	600	540	
	Speed setting	-					80%	65%	50%	45%	

Note 1. The moving range when returning to origin and the stop position when stopping by the mechanical stopper.
 Note 2. The shaded position indicates an user cable extraction port.

Note 3. When the X-axis stroke is longer than 750mm, resonance of the ball screw may occur depending on the operation conditions (critical speed). In this case, reduce the speed setting on the program by referring to the maximum speeds shown in the table at the left.

- APPLICATION
- TRANSERO Compact single-axis robots
- FLIP-X Single-axis robots
- PHASER Linear motor single-axis robots
- XY-X Cartesian robots
- YK-X SCARA robots
- YP-X Pick & place robots
- CLEAN
- CONTROLLER INFORMATION
- Arm type
- Gantry type
- Moving arm type
- Pole type
- XZ type