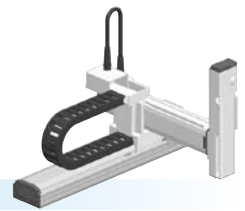


MXYx

3 axes / ZFL20/10



- Moving arm type
- Cable carrier
- Z-axis: clamped base / moving table type (200W)

Ordering method

MXYx - C

| Model | Cable | Combination | X-axis stroke | Y-axis stroke | ZR-axis | Z-axis stroke | Cable |
|-------|-------|-------------|---------------|---------------|----------------|---------------|--------------------------------|
| | | M1 M3 | 25 to 125cm | 15 to 55cm | ZFL20 ZFL10 | 15 to 35cm | 3L: 3.5m 5L: 5m 10L: 10m |

RCX340-3

| Controller / Number of controllable axes | Safety standard | Option A (OP.A) | Option B (OP.B) | Option C (OP.C) | Option D (OP.D) | Option E (OP.E) | Absolute battery |
|--|-----------------|-----------------|-----------------|-----------------|-----------------|-----------------|------------------|
| | | | | | | | |

Specify various controller setting items. RCX340 ▶ **P494**

RCX240

| Controller | CE Marking | Regenerative unit | Expansion I/O | Network option | IVY System | Gripper | Battery |
|------------|------------|-------------------|---------------|----------------|------------|---------|---------|
| | | | | | | | |

Specify various controller setting items. RCX240/RCX240S ▶ **P481**

Specification

| | X-axis | Y-axis | Z-axis: ZFL20 | Z-axis: ZFL10 |
|--|----------------------------|-----------------------|--|---------------|
| Axis construction ^{Note 1} | F17 | F14H | F10-BK equivalent guide-reinforced model | |
| AC servo motor output (W) | 400 | 200 | 200 | |
| Repeatability ^{Note 2} (mm) | +/-0.01 | +/-0.01 | +/-0.01 | |
| Drive system | Ball screw (Class C7) | Ball screw (Class C7) | Ball screw (Class C7) | |
| Ball screw lead (Deceleration ratio) (mm) | 20 | 20 | 20 | 10 |
| Maximum speed ^{Note 3} (mm/sec) | 1200 | 1200 | 1200 | 600 |
| Moving range (mm) | 250 to 1250 | 150 to 550 | 150 to 350 | |
| Robot cable length (m) | Standard: 3.5 Option: 5,10 | | | |

Note. The standard types are ZFL with higher rigidity as compared with ZF types which are conventional standard types. When you need the ZF type, please consult YAMAHA.

Note 1. Use caution that the frame machining (installation holes, tap holes) differs from single-axis robots.

Note 2. Positioning repeatability in one direction.

Note 3. When the X-axis stroke is longer than 850mm, resonance of the ball screw may occur depending on the operation conditions (critical speed). In this case, reduce the speed setting on the program by referring to the maximum speeds shown in the table below.

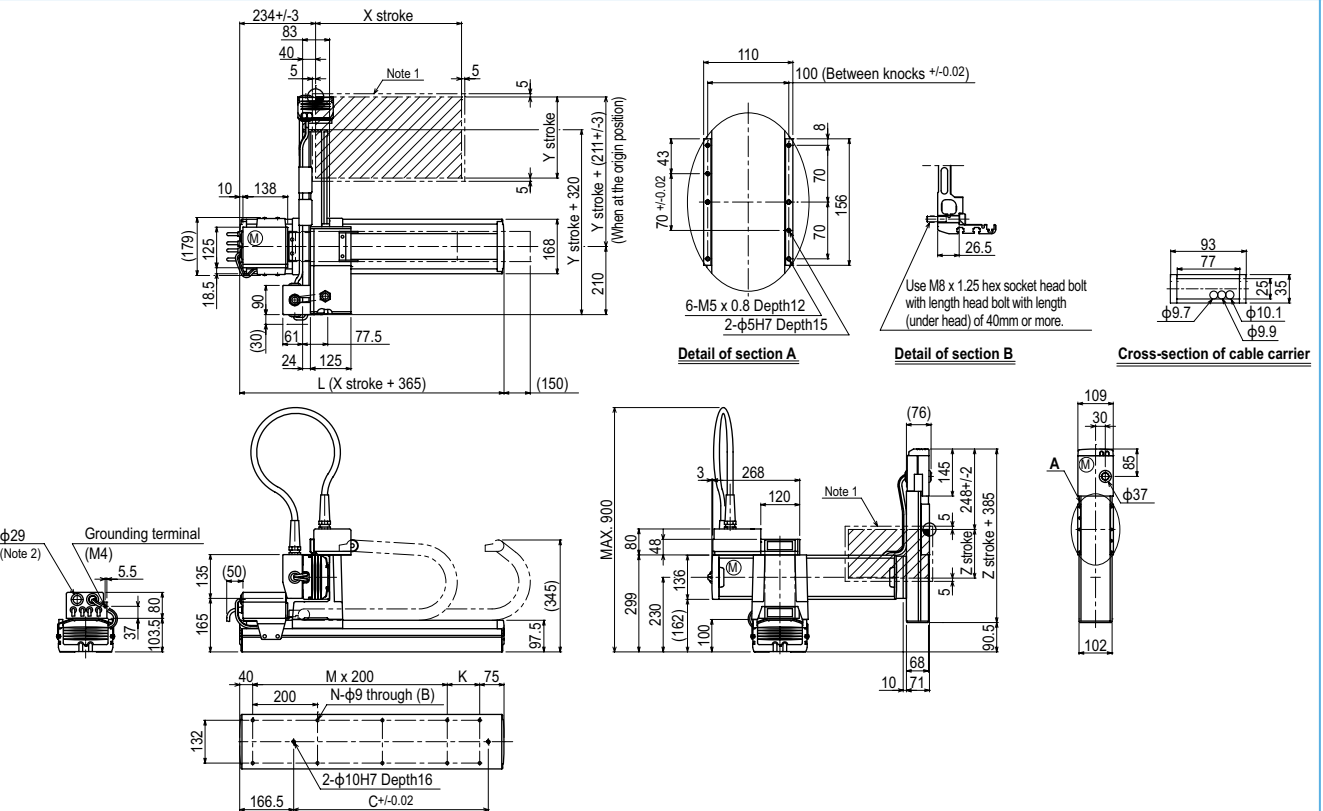
Maximum payload (kg)

| Y stroke (mm) | Z stroke (mm) | | | | | |
|---------------|---------------|-----|-----|-------|-----|-----|
| | ZFL20 | | | ZFL10 | | |
| | 150 | 250 | 350 | 150 | 250 | 350 |
| 150 to 550 | 8 | 8 | 8 | 12 | 11 | 10 |

Controller

| Controller | Operation method |
|------------|--|
| RCX340 | Programming / I/O point trace / Remote command / Operation using RS-232C communication |
| RCX240-R | |

MXYx 3 axes / ZFL20/10 M1



| | 250 | 350 | 450 | 550 | 650 | 750 | 850 | 950 | 1050 | 1150 | 1250 | | | | | |
|---|---------------|-----|------|-----|------|------|------|------|------|------|------|--|-----|--|-----|--|
| X stroke | | | | | | | | | | | | | | | | |
| L | 615 | 715 | 815 | 915 | 1015 | 1115 | 1215 | 1315 | 1415 | 1515 | 1615 | | | | | |
| K | 100 | 200 | 100 | 200 | 100 | 200 | 100 | 200 | 100 | 200 | 100 | | | | | |
| C | 240 | 420 | 600 | 600 | 780 | 780 | 960 | 960 | 1140 | 1140 | 1320 | | | | | |
| M | 2 | 2 | 3 | 3 | 4 | 4 | 5 | 5 | 6 | 6 | 7 | | | | | |
| N | 8 | 8 | 10 | 10 | 12 | 12 | 14 | 14 | 16 | 16 | 18 | | | | | |
| Y stroke | 150 | 250 | 350 | 450 | 550 | | | | | | | | | | | |
| Z stroke | 150 | 250 | 350 | | | | | | | | | | | | | |
| Maximum speed for each stroke (mm/sec) ^{Note 1} | X-axis | | 1200 | | | | 960 | | 840 | | 720 | | 600 | | 480 | |
| | Speed setting | | - | | | | 80% | | 70% | | 60% | | 50% | | 40% | |

Note 1. The moving range when returning to origin and the stop position when stopping by the mechanical stopper.

Note 2. User cable extraction port.

Note 3. When the X-axis stroke is longer than 850mm, resonance of the ball screw may occur depending on the operation conditions (critical speed). In this case, reduce the speed setting on the program by referring to the maximum speeds shown in the table at the left.