

# SSC04

CE compliance



## Ordering method

**SSC04** - **S** - [ ] - [ ] - [ ] - [ ] - [ ] - [ ] - [ ] - [ ] - [ ] - [ ]

Model	Lead	Type	Brake	Direction of air coupler installation	Origin position	Stroke	Cable length <sup>Note 1</sup>	Robot positioner	I/O	Battery <sup>Note 4</sup>
	12: 12mm 6: 6mm 2: 2mm	S: Straight	N: With no brake B: With brake	RJ: Right (Standard) LJ: Left	N: Standard Z: Non-motor side	50 to 400 (50mm pitch)	1L: 1m 3L: 3m 5L: 5m 10L: 10m	S2: TS-S2 <sup>Note 2</sup> SH: TS-SH	NP: NPN PN: PNP CC: CC-Link DN: DeviceNet™ EP: EtherNet/IP™ GW: No I/O board <sup>Note 3</sup>	B: With battery (Absolute) N: None (Incremental)

**SD** - **1**

Robot driver	I/O cable
SD: TS-SD	1: 1m

Note 1. The robot cable is flexible and resists bending.  
 Note 2. See P.446 for DIN rail mounting bracket.  
 Note 3. Select this selection when using the gateway function. For details, see P.439.  
 Note 4. Select whether or not the battery is provided only when using the TS-SH.

## Basic specifications

Motor	42 □ Step motor		
Repeatability <sup>Note 1</sup> (mm)	+/-0.02		
Deceleration mechanism	Ball screw φ8 (Class C10)		
Maximum motor torque (N·m)	0.27		
Ball screw lead (mm)	12	6	2
Maximum speed (mm/sec)	600	300	100
Maximum payload (kg)	Horizontal	2	4
	Vertical	1	4
Max. pressing force (N)	45	90	150
Stroke (mm)	50 to 400 (50mm pitch)		
Overall length (mm)	Horizontal	Stroke+216	
	Vertical	Stroke+261	
Maximum outside dimension of body cross-section (mm)	W49 × H59		
Cable length (m)	Standard: 1 / Option: 3, 5, 10		
Degree of cleanliness	CLASS 10 <sup>Note 2</sup>		
Intake air (Nℓ/min)	Lead 12	Lead 6	Lead 2
	50	30	15

Note 1. Positioning repeatability in one direction.  
 Note 2. Per 1cf (0.1μm base), when suction blower is used.

## Allowable overhang <sup>Note</sup>

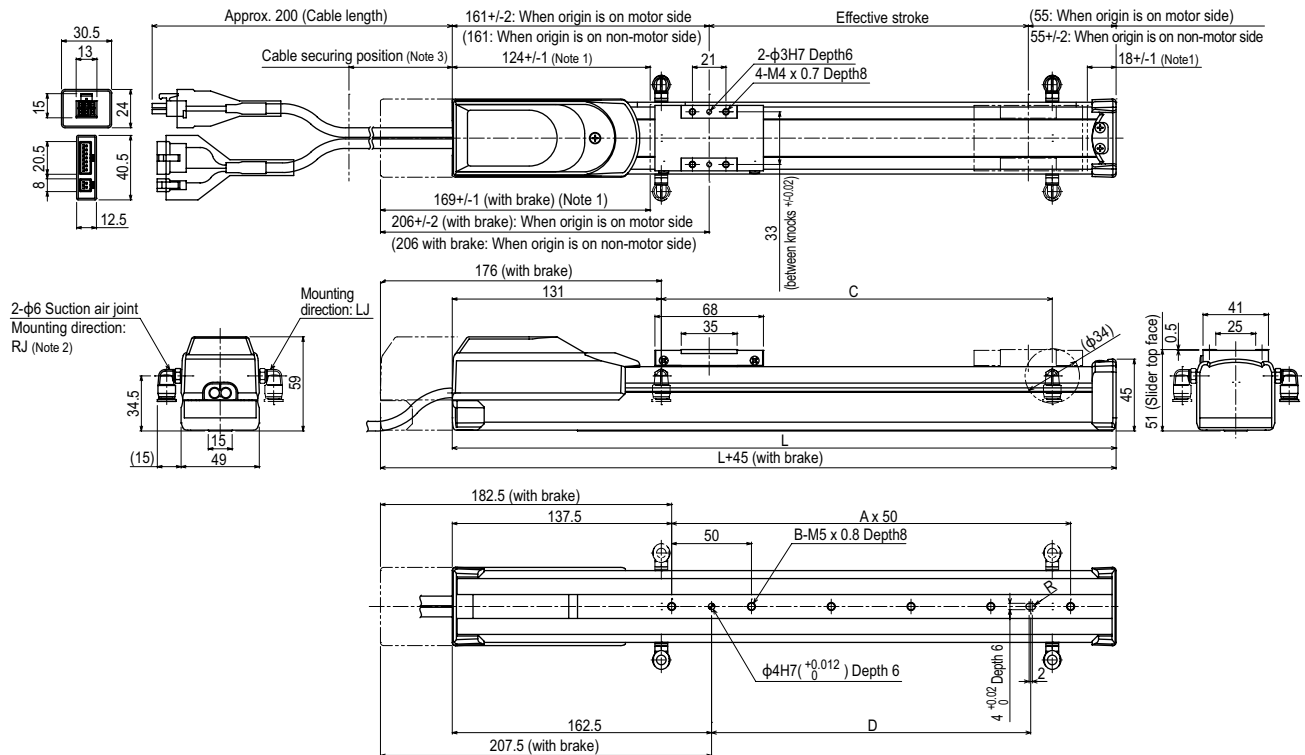
Horizontal installation (Unit: mm)				Wall installation (Unit: mm)				Vertical installation (Unit: mm)				
Lead	1kg	2kg	3kg	Lead	1kg	2kg	3kg	Lead	0.5kg	1kg	2kg	4kg
12	807	667	556	12	274	133	92	12	407	204	107	53
6	218	107	76	6	204	93	62	6	408	204	107	53
2	292	152	112	2	776	611	516	2	408	223	118	53

Static loading moment (Unit: N·m)

MY	MP	MR
16	19	17

Note. Distance from center of slider upper surface to conveyor center-of-gravity at a guide service life of 10,000 km (Service life is calculated for 400mm stroke models).

## SSC04



Effective stroke	50	100	150	200	250	300	350	400
	L	266	316	366	416	466	516	566
A	2	3	4	5	6	7	8	9
B	3	4	5	6	7	8	9	10
C	50	100	150	200	250	300	350	400
Weight (kg) <sup>Note 5</sup>	1.5	1.6	1.7	1.8	2.0	2.1	2.2	2.3

Note 1. Stop positions are determined by the mechanical stoppers at both ends.  
 Note 2. Either right or left can be selected for the suction air joint mounting direction. This drawing shows the RJ (standard) direction.  
 Note 3. Secure the cable with a tie-band 100mm or less from unit's end face to prevent the cable from being subjected to excessive loads.  
 Note 4. The cable's minimum bend radius is R30.  
 Note 5. These are the weights without a brake. The weights are 0.2kg heavier when equipped with a brake.

APPLICATION  
 Compact single-axis robots  
 TRANSERO  
 Single-axis robots  
 FLIP-X  
 Linear motor single-axis robots  
 PHASER  
 Cartesian robots  
 XX-X  
 SCARA robots  
 YK-X  
 Pick & place robots  
 YP-X  
 CLEAN  
 CONTROLLER INFORMATION  
 Single-axis  
 Cartesian  
 SCARA